



UN FORKLIFT

N Series Forklift Truck

1.5-3.5 Ton Diesel Forklift
1.5-3.5 Ton Gasoline / LPG Forklift



N Series IC Forklift

1500kg to 3500kg Load Capacity



Reliability

Advanced
Safety

Ergonomics
and Comfort

Superb
Productivity

UN's 1500kg to 3500kg forklifts are designed to excel in the most challenging environments. With increased safety, enhanced cooling systems, reduced noise and vibration all with low maintenance. The UN Forklift reduce the total cost of ownership. With refined performance at an affordable price, UN Forklifts provide reliable solutions with increased efficiency to drive productivity in your operations.





1.5T FORKLIFT

3m Duplex Mast, Pneumatic Tyres



1.8T FORKLIFT

3m Duplex Mast, Pneumatic Tyres



2.0T FORKLIFT

3m Duplex Mast, Pneumatic Tyres



2.5T FORKLIFT

3m Duplex Mast, Pneumatic Tyres



3.0T FORKLIFT

3m Duplex Mast, Pneumatic Tyres



3.5T FORKLIFT

3m Duplex Mast, Pneumatic Tyres

ADDITIONAL OPTIONS AVAILABLE:

Triplex Mast, Solid and Non-marking Tyres, Fork Positioner

Market leading engines ensure superior performance, durability and excellent fuel efficiency. All diesel forklifts have Mitsubishi or Isuzu engines. The LPG and gasoline forklifts utilise Nissan engines.

ISUZU





Freight



Store
Distribution



Manufacturing



Farming &
Landscape



Packing



Third Party
Logistics



Reliability

10%

Steering System

The Hydraulic steering system-improves energy efficiency.

25%

Lifting & Driving System

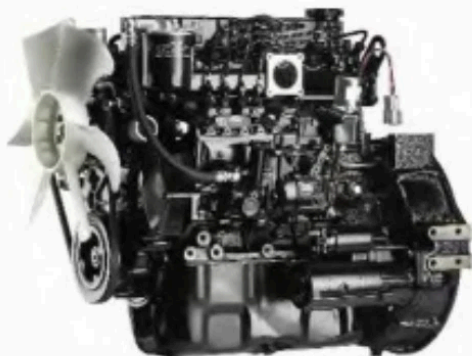
The unique hydraulic technology increases lifting speed by 25% and improves driving speed.



Excellent hydraulic system delivers great performance

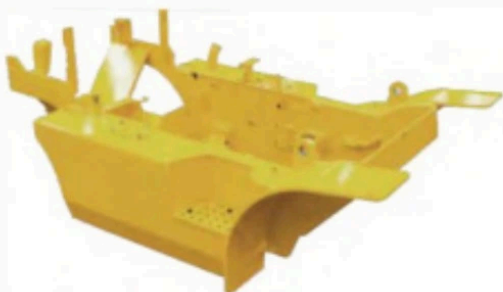
- Uses a load-sensing flow value for steering to reduce horsepower loss and heat build up.
- The main hydraulic values incorporates adjustable flow controls for tilt and auxiliary functions.
- Allows for easy addition of extra functions and simplifies service.
- Controlled lowering speed that is independent of load speed.

Rugged Engine and Optimal Performance



EPA Tier IV EURO III A/B

Market leading, quality engines ensure superior performance, durability and excellent fuel efficiency.



EPA Heavy Duty One-Piece Truck Frame

Heavy duty one-piece truck frame, with its welded and formed steel plate design, protects it from impact damage and extends the lift span.



EPA New Designed Radiator

New radiator is designed with thinner water conduits and extended wave length to increase ventilation and air flow.



Multi-functional Dashboard

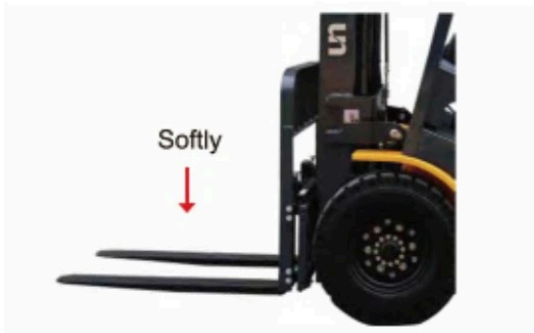
The newly designed dashboard has larger screens resulting in improved visibility.

Repositioning of hydraulic pipelines around the fuel tank and the enhanced cooling system keeps engine temperature lower, even in the harshest working environments.





Advanced Safety



Fork Safety Features

When the forks are being lowered, a down-control valve maintains the controlled speed. The down-safety valve prevents forks from dropping down in case of sudden damage to the hydraulic line.



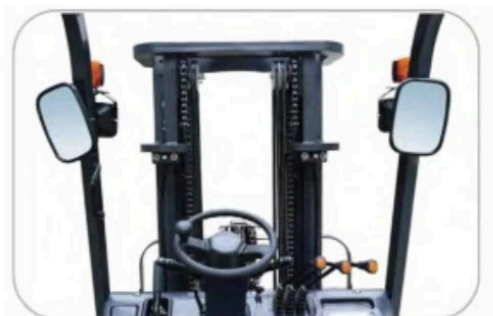
OPS Operator Presence Sensor

This comprehensive safety system includes a seat-actuated, power interrupt with mast-lock, automatically preventing lift and tilt operations if the operator leaves the seat.



Strong Rollover Protection Structure

Exceeding CE or ANSI regulations, the ROPS offers optimal protection combined with excellent all-around visibility.



Excellent Visibility for Safe Operation

Optimised lift cylinder arrangement provides operator with wider visibility and the panoramic mirror expands the driver's view when reversing.



Parking Brake

Toggle type parking brake requires less effort from the operator to set.

1.5 - 1.8 TON MAST SPECIFICATIONS & RATED CAPACITIES

Mast Type	Mast Name	Max Fork Height (mm)	Load Capacity (kg)		Overall Height (mm)			Free Lift (mm)		Tilt Angle (Single)	Tilt Angle (Double)	Total Weight (kg)	
					Lowered	Extended		Without Backrest	With Backrest				
						1.5t	1.8t					1.5t / 1.8t	
Wide View Mast	M300	3000	1500	1800	2025	3575	4055	100	100		6-12	2860	2990
	M330	3300	1500	1800	2175	3875	4355	100	100		6-12	2875	3005
	M350	3500	1500	1800	2275	4075	4555	100	100		6-12	2885	3015
	M400	4000	1500	1750	2575	4575	5055	100	100	6-6	*6-12	2925	3055
	M430	4300	1300	1650	2725	4875	5355	100	100	6-6	*6-12	2940	3070
	M450	4500	1250	1550	2825	5075	5555	100	100	6-6	*6-12	2955	3085
	M470	4700	1100	1400	2925	5275	5755	100	100	6-6	*6-12	2965	3095
	M500	5000	950	1050	3125	5575	6055	100	100	6-6	*6-6	2995	3125
	M550	5500	800	900	3375	6075	6555	100	100	3-6	*3-6	3020	3050
	M600	6000	600	700	3625	6575	7055	100	100	3-6	*3-6	3045	3175
2-Stage Full Free Wide View Mast	FM300	3000	1500	1800	2025	3570	4050	1460	980	6-12	*6-12	2935	3065
	FM330	3300	1500	1800	2175	3920	4400	1610	1130	6-12	*6-12	2950	3080
	FM350	3500	1500	1800	2275	4070	4550	1710	1230	6-12	*6-12	2960	3090
	FM400	4000	1500	1800	2625	4570	5050	2000	1580	6-6	*6-12	3000	3130
3-Stage Full Free Wide View Mast	TFM400	4000	1500	1800	1925	4570	5035	1300	900	6-6	*6-6	3025	3155
	TFM430	4300	1250	1550	2025	4870	5335	1400	1000	6-6	*6-6	3045	3175
	TFM450	4500	1200	1500	2075	5070	5535	1500	1050	6-6	*6-6	3060	3190
	TFM470	4700	1180	1400	2125	5270	5735	1565	1100	6-6	*6-6	3075	3205
	TFM500	5000	900	1200	2225	5570	6035	1665	1200	6-6	*6-6	3100	3230
	TFM550	5500	800	1000	2425	6070	6535	1800	1400	3-6	*3-6	3140	3270
	TFM600	6000	600	700	2625	6570	7035	2000	1600	3-6	*3-6	3190	3320

Note: With Separated side shifter, load capacity subtract 150kg; with integrated side shifter, load capacity subtract 50kg.

2.0 - 2.5 TON MAST SPECIFICATIONS & RATED CAPACITIES

MastType	Mast Name	Max Fork Height (mm)	Load Capacity (kg)				Overall Height (mm)			Free Lift (mm)		Tilt Angle (Single)	Tilt Angle (Double)	Total Weight (kg)	
							Lowered	Extended		Without Backrest	With Backrest				
			2.0t	2.0t (Double)	2.0t	2.0t (Double)		2.0t / 2.5t	2.0t / 2.5t						
Wide View Mast	M300	3000	2000		2500	2055	3580	4070	100	100		6-12	3385	3605	
	M330	3300	2000		2500	2205	3880	4370	100	100		6-12	3410	3627	
	M350	3500	2000		2500	2305	4080	4570	100	100		6-12	3425	3645	
	M400	4000	2000		2450	2605	4580	5070	100	100	6-6	*6-12	3495	3685	
	M430	4300	1850		2150	2755	4880	5370	100	100	6-6	*6-12	3520	3710	
	M450	4500	1800	*1900	2000	*2400	2855	5080	5570	100	100	6-6	*6-12	3535	3725
	M470	4700	1450	*1850	1750	*2050	2955	5280	5770	100	100	6-6	*6-12	3555	3745
	M500	5000	1300	*1700	1600	*2100	3155	5580	6070	100	100	6-6	*6-6	3585	3775
	M550	5500	1100	*1500	1350	*1700	3405	6080	6570	100	100	3-6	*3-6	3625	3815
	M600	6000	950	*1300	1050	*1500	3655	6580	7070	100	100	3-6	*3-6	3665	3855
2-Stage Full Free Wide View Mast	FM300	3000	2000		2500	2070	3605	4068	1470	1007		6-12	3455	3645	
	FM330	3300	2000		2500	2220	3955	4418	1620	1157		6-12	3480	3670	
	FM350	3500	2000		2500	2320	4105	4568	1720	1257		6-12	3495	3685	
	FM400	4000	2000		2500	2670	4605	5068	2000	1607	6-6	*6-12	3535	3725	
3-Stage Full Free Wide View Mast	TFM400	4000	2000	*2000	2500	*2500	1945	4607	5070	1300	885	6-6	*6-6	3565	3755
	TFM430	4300	1850	*1900	2200	*2400	2045	4907	5370	1400	985	6-6	*6-6	3595	3785
	TFM450	4500	1700	*1800	2000	*2300	2095	5107	5570	1498	1035	6-6	*6-6	3615	3805
	TFM470	4700	1600	*1750	1900	*2200	2145	5307	5770	1548	1085	6-6	*6-6	3635	3825
	TFM500	5000	1400	*1600	1500	*2000	2245	5607	6070	1648	1185	6-6	*6-6	3665	3855
	TFM550	5500	1100	*1500	1200	*1800	2445	6107	6570	1800	1385	3-6	*3-6	3715	3905
	TFM600	6000	800	*1400	850	*1600	2645	6607	7070	2000	1585	3-6	*3-6	3765	3955
	TFM650	6500	500	*1100	550	*1200	2895	7107	7570	2200	1835	3-6	*3-6	3815	4005
	TFM700	7000	100	*700	150	*800	3095	7607	8070	2300	2035	3-6	*3-6	3865	4005

Note 1: With Separated side shifter, load capacity subtract 200kg; with integrated side shifter, load capacity subtract 50kg.

2. *(Asterisk) is for double front wheels model

3.0 - 3.5 TON MAST SPECIFICATIONS & RATED CAPACITIES

MastType	Mast Name	Max Fork Height (mm)	Load Capacity (kg)				Overall Height (mm)			Free Lift (mm)		Tilt Angle (Single)	Tilt Angle (Double)	Total Weight (kg)		
							Lowered	Extended		Without Backrest	With Backrest					
			3.0t	3.0t (Double)	3.5t	3.5t (Double)		3.0t / 3.5t	3.0t / 3.5t							
Wide View Mast	M300	3000	3000		3500	2070	3595	4070	100	100		6-12		4460	4775	
	M330	3300		3000	3500	2220	3895	4370	100	100		6-12		4485	4800	
	M350	3500		3000	3500	2320	4095	4570	100	100		6-12		4500	4825	
	M400	4000		2950	3250	2620	4595	5070	100	100	6-6	*6-12	4540	4865		
	M430	4300		2800	3100	2770	4895	5370	100	100	6-6	*6-12	4565	4890		
	M450	4500	2600	*2900	2900	*3000	2870	5095	5570	100	100	6-6	*6-12	4580	4905	
	M470	4700	2500	*2800	2800	*2900	2970	5295	5770	100	100	6-6	*6-12	4595	4920	
	M500	5000	2200	*2550	2400	*2800	3170	5595	6070	100	100	6-6	*6-6	4630	4955	
	M550	5500	2000	*2400	2200	*2600	3420	6095	6570	100	100	3-6	*3-6	4680	5005	
	M600	6000	1500	*2000	1600	*2400	3670	6595	7070	100	100	3-6	*3-6	4720	5045	
2-Stage Full Free Wide View Mast	FM300	3000		3000		3500	2070	3590	4065	1382	907		6-12	4540	4865	
	FM330	3300		3000		3500	2220	3940	4415	1532	1057		6-12	4565	4890	
	FM350	3500		3000		3500	2320	4090	4565	1632	1157		6-12	4580	4905	
	FM400	4000		3000		3250	2670	4590	5065	1982	1507	6-6	*6-12	4620	4945	
3-Stage Full Free Wide View Mast	TFM400	4000	2000		*3000	3000	*3500	1960	4700	5175	1272	797	6-6	*6-6	4670	4995
	TFM430	4300	2800		*2900	3000	*3350	2060	5000	5475	1372	897	6-6	*6-6	4700	5025
	TFM450	4500	2600		*2800	2800	*3200	2110	5200	5675	1422	947	6-6	*6-6	4720	5045
	TFM470	4700	2400		*2700	2500	*3000	2160	5400	5875	1472	997	6-6	*6-6	4740	5065
	TFM500	5000	2100		*2400	2300	*2800	2260	5700	6175	1572	1097	6-6	*6-6	4750	5075
	TFM550	5500	1650		*2250	1800	*2550	2460	6200	6675	1772	1297	3-6	*3-6	4800	5125
	TFM600	6000	1200		*2100	1300	*2300	2660	6700	7175	1972	1497	3-6	*3-6	4870	5195
	TFM650	6500	950		*1700	1050	*1800	2910	7200	7675	2200	1747	3-6	*3-6	5020	5345
	TFM700	7000	650		*1400	750	*1500	3110	7700	8175	2300	1947	3-6	*3-6	5070	5395

Note 1: With Separated side shifter, load capacity subtract 200kg; with integrated side shifter, load capacity subtract 50kg.

2. *(Asterisk) is for double front wheels model

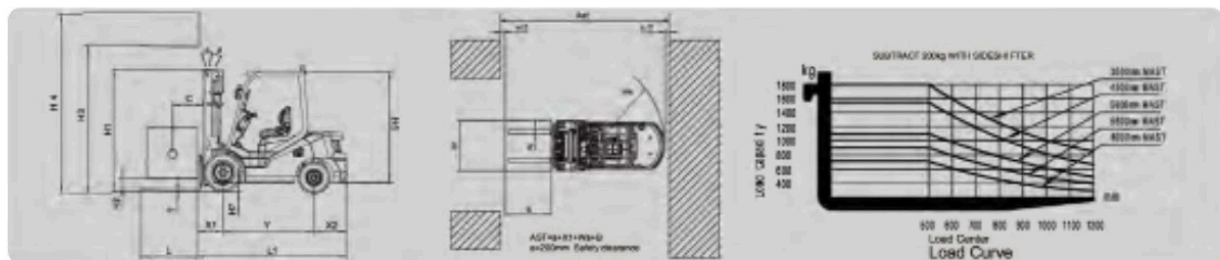


N Series Internal Combustion

Diesel Forklift 1.5-1.8T

MAIN SPECIFICATIONS

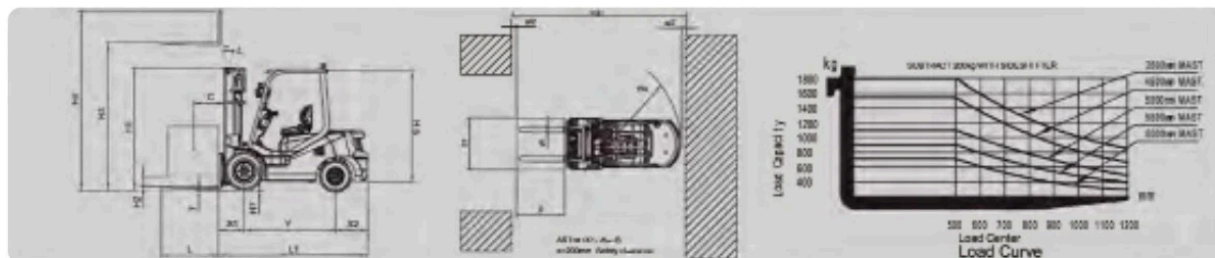
General	1	Model		FD15T-WGA5	FD18T-WGA5	FD15T-NJB1	FD18T-NJB1	FD15T-NJE3	FD18T-NJE3
	2	Power Type		Diesel					
	3	Rated Load Capacity	Q (kg)	1500	1800	1500	1800	1500	1800
	4	Load centre	C (mm)	500					
Characteristic & Dimension	5	Rated Lift Height	H3 (mm)	3000					
	6	Free Lift Height	H2 (mm)	100					
	7	Fork Size (L x W x T)	mm	920x120x35	1070x120x40	920x120x35	1070x120x40	920x120x35	1070x120x40
	8	Mast Tilt Angle (F/R, α ° / β °)	deg	6° / 12°					
	9	Fork Overhang (Wheel Center to Fork Face)	x1 (mm)	409					
	10	Rear Overhang	x2 (mm)	470					
	11	Ground Clearance (Bottom of Mast)	H7 (mm)	110					
	12	Length to Face of Fork (without Fork)	L1 (mm)	2285					
	13	Overall Width	B1 (mm)	1082					
	14	Mast Lowered Height	H1 (mm)	2025					
	15	Mast Extended Height (with Backrest)	H4 (mm)	4055					
	16	Overhead Guard Height	H5 (mm)	2160					
	17	Turning Radius (Outside)	Wa (mm)	2100					
	18	Min Aisle width for pallets	mm	3700					
Performance	19	Travel Speed (No Load)	km/h	14.5					
	20	Lifting Speed (Full Load)	mm/sec	560					
	21	Max. Gradeability (Full Load)	%	20					
	22	Wheelbase	Y (mm)	1410					
Weight	23	Total Weight	kg	2860	2990	2860	2990	2860	2990
	24	Front Axle Weight Distribution (Full Load/No Load)	kg	3815/1200	4120/1170	3815/1200	4120/1170	3815/1200	4120/1170
	25	Rear Axle Weight Distribution (Full Load/No Load)	kg	545/1660	720/1820	545/1660	720/1820	545/1660	720/1820
Power & Transmission	26	Battery	V/Ah	12/90					
	27	Engine Model		NC485BPG		C240NKFC-01		4TNE92 (EU III & EPAIII)	
	28	Engine Manufacturer		XINCHAI		ISUZU		YANMAR	
	29	Rated Output / r.p.m	kw	30/2600		34.5/2500		33/2450	
	30	Transmission Type		Powershift (Manual)					
	31	Transmission Stage (FWD/RVS)		1/1 (2/2)					
	32	Operating Pressure (For Attachments)	Mpa	14.5					



Gasoline & LPG Forklift 1.5-1.8T

MAIN SPECIFICATIONS

General	1	Model		FGL15T-NJK2	FGL18T-NJK2
				FG15T-NJK2	FG18T-NJK2
				FL15T-NJK2	FL18T-NJK2
Characteristic & Dimension	2	Power Type		Gasoline / LPG	
	3	Rated Load Capacity	Q (kg)	1500	1800
	4	Load centre	C (mm)	500	
	5	Rated Lift Height	H3 (mm)	3000	
	6	Free Lift Height	H2 (mm)	100	
	7	Fork Size (L x W x T)	mm	920x120x35	1070x120x40
	8	Mast Tilt Angle (F/R, $\alpha^\circ / \beta^\circ$)	deg	6° x 12°	
	9	Fork Overhang (Wheel Center to Fork Face)	x1 (mm)	409	
	10	Rear Overhang	x2 (mm)	407	
	11	Ground Clearance (Bottom of Mast)	H7 (mm)	110	
	12	Length to Face of Fork (without Fork)	L1 (mm)	2285	
	13	Overall Width	B1 (mm)	1082	
	14	Mast Lowered Height	H1 (mm)	2025	
	15	Mast Extended Height (with Backrest)	H4 (mm)	4055	
	16	Overhead Guard Height	H5 (mm)	2160	
	17	Turning Radius (Outside)	Wa (mm)	2100	
	18	Min Aisle width for pallets	Astmm	3700	
Performance	19	Travel Speed (No Load)	km/h	14.5	
	20	Lifting Speed (Full Load)	mm/sec	560	
	21	Max. Gradeability (Full Load)	%	20	
	22	Front Tread	B2 (mm)	890	
	23	Rear Tread	B3 (mm)	920	
	24	Wheelbase	Y (mm)	1410	
Weight	25	Total Weight	kg	2860	2990
	26	Front Axle Weight Distribution (Full Load/No Load)	kg	3815/1200	4120/1170
	27	Rear Axle Weight Distribution (Full Load/No Load)	kg	545/1660	720/1820
Transmission	28	Battery	V/Ah	12/60	
	29	Engine Model		K21	
	30	Engine Manufacturer		NISSAN	
	31	Rated Output / r.p.m	kw	31.5/2300	
	32	Transmission Type		Powershift (Manual)	
	33	Transmission Stage (FWD/RVS)		1/1 (2/2)	
	34	Operating Pressure (For Attachments)	Mpa	14.5	

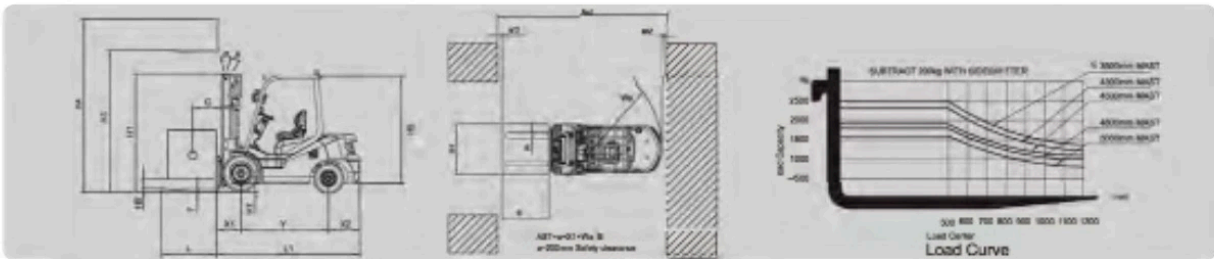




Diesel Forklift 2.5-2.5T

MAIN SPECIFICATIONS

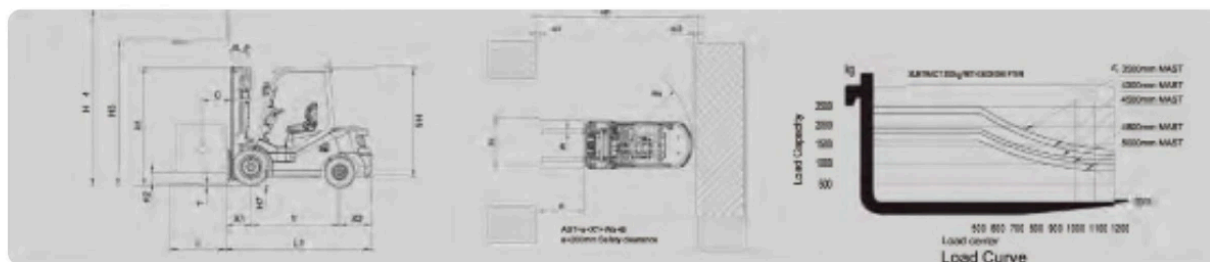
General	1	Model		FD20T-WJA3	FD25T-WJA3	FD20T-NJB1	FD25T-NJB1	FD20T-NJE3	FD25T-NJE3	
	2	Power Type		Diesel						
	3	Rated Load Capacity	Q (kg)	2000	2500	2000	2500	2000	2500	
Characteristic & Dimension	4	Load centre	C (mm)	500						
	5	Rated Lift Height	H3 (mm)	3000						
	6	Free Lift Height	H2 (mm)	100						
	7	Fork Size (L x W x T)	mm	1070x120x40						
	8	Mast Tilt Angle (F/R, α ° / β °)	deg	6° / 12°						
	9	Fork Overhang (Wheel Center to Fork Face)	x1 (mm)	479						
	10	Rear Overhang	x2 (mm)	520						
	11	Ground Clearance (Bottom of Mast)	H7 (mm)	130						
	12	Length to Face of Fork (without Fork)	L1 (mm)	2660						
	13	Overall Width	B1 (mm)	1150						
	14	Mast Lowered Height	H1 (mm)	2055						
	15	Mast Extended Height (with Backrest)	H4 (mm)	4070						
	16	Overhead Guard Height	H5 (mm)	2215						
	17	Turning Radius (Outside)	Wa (mm)	2365						
	Performance	18	Min Aisle width for pallets	Ast (mm)	4120					
		19	Travel Speed (No Load)	km/h	19					
		20	Lifting Speed (Full Load)	mm/sec	490					
21		Max. Gradeability (Full Load)	%	20						
22		Wheelbase	Y (mm)	1650						
Weight	23	Total Weight	kg	3385	3605	3385	3605	3385	3605	
	24	Front Axle Weight Distribution (Full Load/No Load)	kg	4846/1354	5494/1442	4846/1354	5494/1442	4846/1354	5494/1442	
	25	Rear Axle Weight Distribution (Full Load/No Load)	kg	538/2031	610/2163	536/2031	610/2163	538/2031	610/2163	
Power & Transmission	26	Battery	V/Ah	12/90						
	27	Engine Model		C490BPG-37 (EU III)		C240NKFC-01 (EU II)		4TNE92 (EU III & EPA III)		
	28	Engine Manufacturer		XINCHAI		ISUZU		YANMAR		
	29	Rated Output / r.p.m	kw	36.8/2650		34.5/2500		33/2450		
	30	Transmission Type		Powershift (Manual)						
	31	Transmission Stage (FWD/RVS)		1/1 (2/2)						
	32	Operating Pressure (For Attachments)	Mpa	17.5						



Gasoline & LPG Forklift 2.0-2.5T

MAIN SPECIFICATIONS

General	1	Model		FGL20T-NJK1	FGL25T-NJK1	FL20T-NJF1	FL25T-NJF1	
				FG20T-NJK1	FG25T-NJK1			
				FL20T-NJK1	FL25T-NJK1			
2	Power Type		Gasoline / LPG		LPG			
3	Rated Load Capacity	Q (kg)	2000	2500	2000	2500		
4	Load centre	C (mm)	500					
Characteristic & Dimension	5	Rated Lift Height	H3 (mm)	3000				
	6	Free Lift Height	H2 (mm)	100				
	7	Fork Size (L x W x T)	mm	1070x120x40				
	8	Mast Tilt Angle (F/R, α ° / β°)	deg	6° / 12°				
	9	Fork Overhang (Wheel Center to Fork Face)	x1 (mm)	479				
	10	Rear Overhang	x2 (mm)	520				
	11	Ground Clearance (Bottom of Mast)	H7 (mm)	130				
	12	Length to Face of Fork (without Fork)	L1 (mm)	2660				
	13	Overall Width	B1 (mm)	1150				
	14	Mast Lowered Height	H1 (mm)	2055				
	15	Mast Extended Height (with Backrest)	H4 (mm)	4070				
	16	Overhead Guard Height	H5 (mm)	2215				
	17	Turning Radius (Outside)	Wa (mm)	2365				
	18	Min Aisle width for pallets	Astmm	4120				
	Performance	19	Travel Speed (No Load)	km/h	19			
		20	Lifting Speed (Full Load)	mm/sec	490			
		21	Wheelbase	Y (mm)	1650			
22		Max. Gradeability (Full Load)	%	20				
23		Total Weight	kg	3385	3605	3385	3605	
Weight	24	Front Axle Weight Distribution (Full Load/No Load)	kg	4846/1354	5494/1442	4846/1354	5494/1442	
	25	Rear Axle Weight Distribution (Full Load/No Load)	kg	538/2031	610/2163	538/2031	610/2163	
Power & Transmission	26	Engine Model		K25		GM3.0		
	27	Engine Manufacturer		NISSAN		GM		
	28	Rated Output / r.p.m	kw	44.2/2500		54/2200		
	29	Battery	V/Ah	12/90				
	30	Transmission Type		Powershift (Manual)				
	31	Transmission Stage (FWD/RVS)		1/1 (2/2)				
	32	Operating Pressure (For Attachments)	Mpa	17.5				

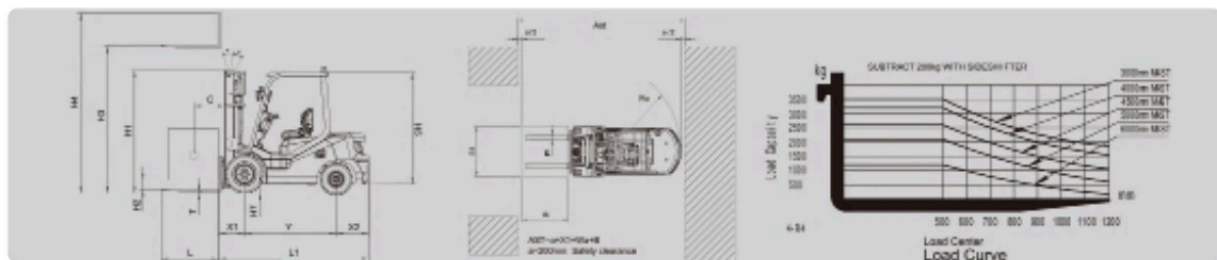




Diesel Forklift 3.0-3.5T

MAIN SPECIFICATIONS

General	1	Model		FD30T-NJE1	FD35T-NJE1	FD30T-NJM1	FD35T-NJM1
	2	Power Type		Diesel			
	3	Rated Load Capacity	Q (kg)	3000	3500	3000	3500
	4	Load centre	C (mm)	500			
Characteristic & Dimension	5	Rated Lift Height	H3 (mm)	3000			
	6	Free Lift Height	H2 (mm)	100			
	7	Fork Size (L x W x T)	mm	1070x125x45			
	8	Mast Tilt Angle (F/R, α ° / β °)	deg	6° / 12°			
	9	Fork Overhang (Wheel Center to Fork Face)	x1 (mm)	484			
	10	Rear Overhang	x2 (mm)	595	635	595	635
	11	Ground Clearance (Bottom of Mast)	H7 (mm)	145			
	12	Length to Face of Fork (without Fork)	L1 (mm)	2700	2775	2700	2775
	13	Overall Width	B1 (mm)	1225			
	14	Mast Lowered Height	H1 (mm)	2070			
	15	Mast Extended Height (with Backrest)	H4 (mm)	4070			
	16	Overhead Guard Height	H5 (mm)	2235			
	17	Turning Radius (Outside)	Wa (mm)	2425	2500	2425	2500
	18	Min Aisle width for pallets	Ast (mm)	4180	4255	4180	4255
Performance	19	Travel Speed (No Load)	km/h	19			
	20	Lifting Speed (Full Load)	mm/sec	410	380	410	380
	21	Max. Gradeability (Full Load)	%	20			
	22	Wheelbase	Y (mm)	1700			
Weight	23	Total Weight	kg	4460	4775	4460	4775
	24	Front Axle Weight Distribution (Full Load/No Load)	kg	714/1784	6997/1910	6714/1784	6997/1910
	25	Rear Axle Weight Distribution (Full Load/No Load)	kg	746/2676	777/2865	746/2676	777/2865
Power & Transmission	26	Battery	V/Ah	12/90			
	27	Engine Model		4TNE98		S4S	
	28	Engine Manufacturer		YANMAR		Mitsubishi	
	29	Rated Output / r.p.m	kw	42.1/2300		35.3/2250	
	30	Transmission Type		Powershift (Manual)			
	31	Operating Pressure (For Attachments)	Mpa	17.5			



Gasoline & LPG Forklift 3.0-3.5T

MAIN SPECIFICATIONS

General	1	Model		FGL30T-NJK1	FGL35T-NJK1	FL30T-NJF1	FL35T-NJF1	
				FG30T-NJK1	FG35T-NJK1			
				FL30T-NJK1	FL35T-NJK1			
2	Power Type		Gasoline / LPG		LPG			
3	Rated Load Capacity	Q (kg)	3000	3500	3000	3500		
4	Load centre	C (mm)	500					
Characteristic & Dimension	5	Rated Lift Height	H3 (mm)	3000				
	6	Free Lift Height	H2 (mm)	100				
	7	Fork Size (L x W x T)	mm	1070x125x45				
	8	Mast Tilt Angle (F/R, α ° / β °)	deg	6° / 12°				
	9	Fork Overhang (Wheel Center to Fork Face)	x1 (mm)	484				
	10	Rear Overhang	x2 (mm)	595	635	595	635	
	11	Ground Clearance (Bottom of Mast)	H7 (mm)	145				
	12	Length to Face of Fork (without Fork)	L1 (mm)	2700	2775	2700	2775	
	13	Overall Width	B1 (mm)	1225				
	14	Mast Lowered Height	H1 (mm)	2070				
	15	Mast Extended Height (with Backrest)	H4 (mm)	4070				
	16	Overhead Guard Height	H5 (mm)	2235				
	17	Turning Radius (Outside)	Wa (mm)	2425	2500	2425	2500	
	18	Min Aisle width for pallets	Astmm	4190	4255	4180	4255	
	Performance	19	Travel Speed (No Load)	km/h	19			
		20	Lifting Speed (Full Load)	mm/sec	410	380	410	380
		21	Max. Gradeability (Full Load)	%	20			
22		Wheelbase	Y (mm)	1700				
23		Total Weight	kg	4460	4775	4460	4775	
Weight	24	Front Axle Weight Distribution (Full Load/No Load)	kg	6714/1764	6997/1910	6714/1784	6997/1910	
	25	Rear Axle Weight Distribution (Full Load/No Load)	kg	746/2676	777/2865	746/2676	777/2865	
Power & Transmission	26	Battery	V/Ah	12/90				
	27	Engine Model		K25		GM3.0		
	28	Engine Manufacturer		NISSAN		GM		
	29	Rated Output / r.p.m	kw	44.2/2500		54/2200		
	30	Transmission Type		Powershift (Manual)				
	31	Transmission Stage (FWD/RVS)		1/1				
	32	Operating Pressure (For Attachments)	Mpa	17.5				

